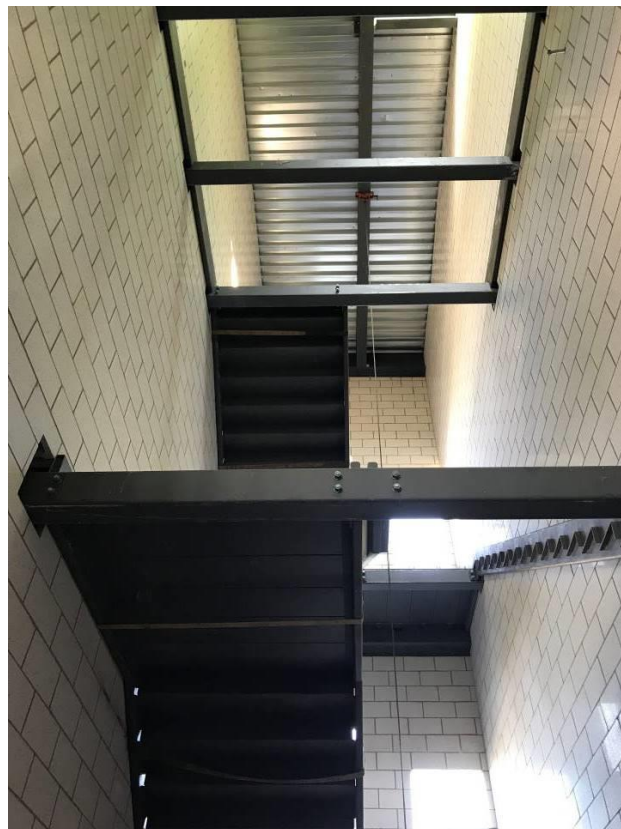




View of the West (or Rear) Elevation of Bldg A



Stair 2 in Progress (Looking up)

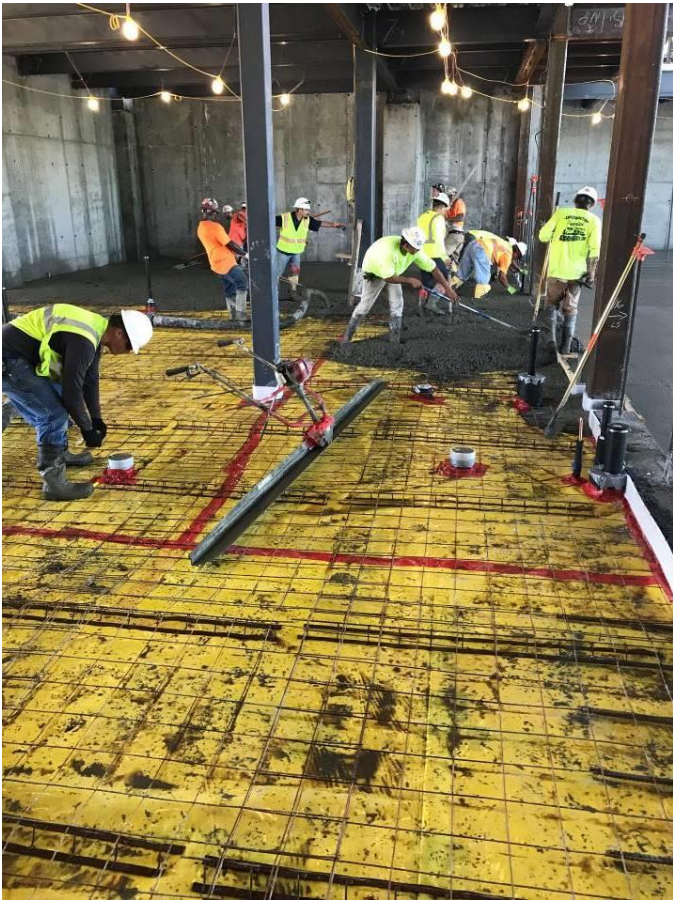


View of Building Looking Northwest



RTU Curb Set on Roof Pad

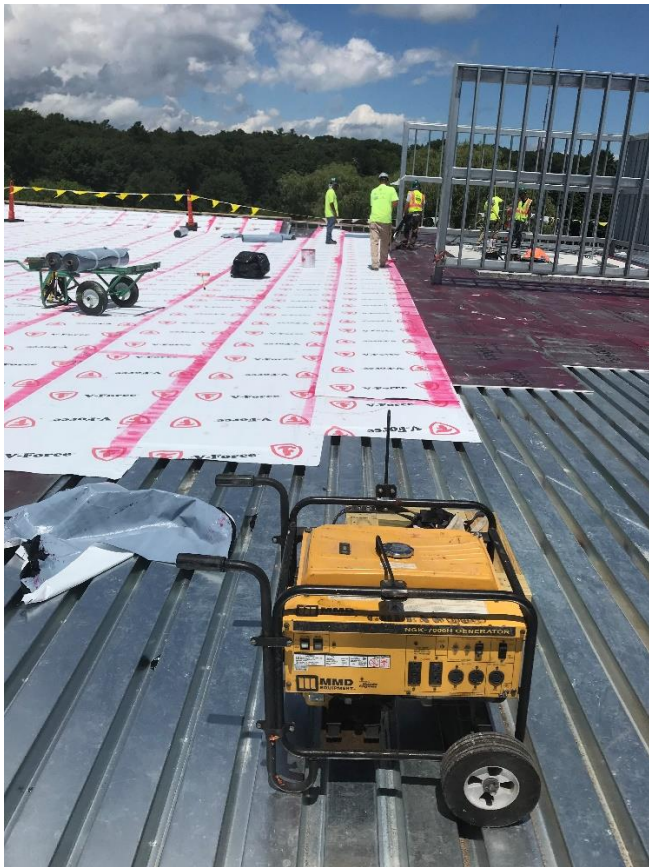




Slab on Grade Pour in Progress in Gym



UG Plumbing in Upper B



Vapor Barrier/Primed Dens Deck @ A Roof



Field Retaining Wall in Progress





Underslab Conduit in Progress Looking Down @ Gym Area